

UNMANNED SURFACE VEHICLE



● HYDROGRAPHIC & OCEANOGRAPHIC SURVEY

● MINE COUNTER MEASURES

● PIPELINE SHORE APPROACH



WIDE CHOICE OF MISSION ORIENTED SENSORS



SIDE SCAN SONAR



MULTI BEAM ECHO SOUNDER



SUB BOTTOM PROFILER

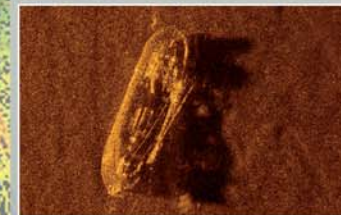


MAGNETOMETER

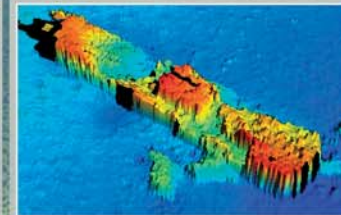


VERY SHALLOW WATER INTERFEROMETRIC SONAR

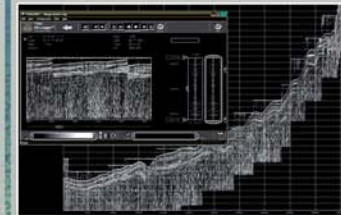
DATA ACQUISITION & POST PROCESSING



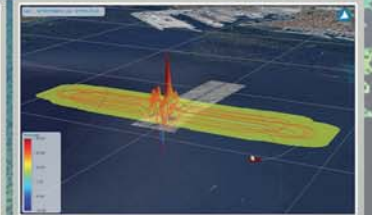
IMAGERY



BATHYMETRY



SEDIMENT ANALYSIS



MAGNETIC MAPPING

